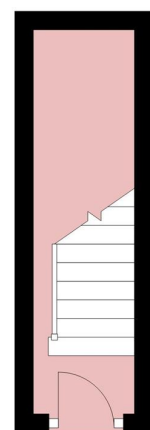


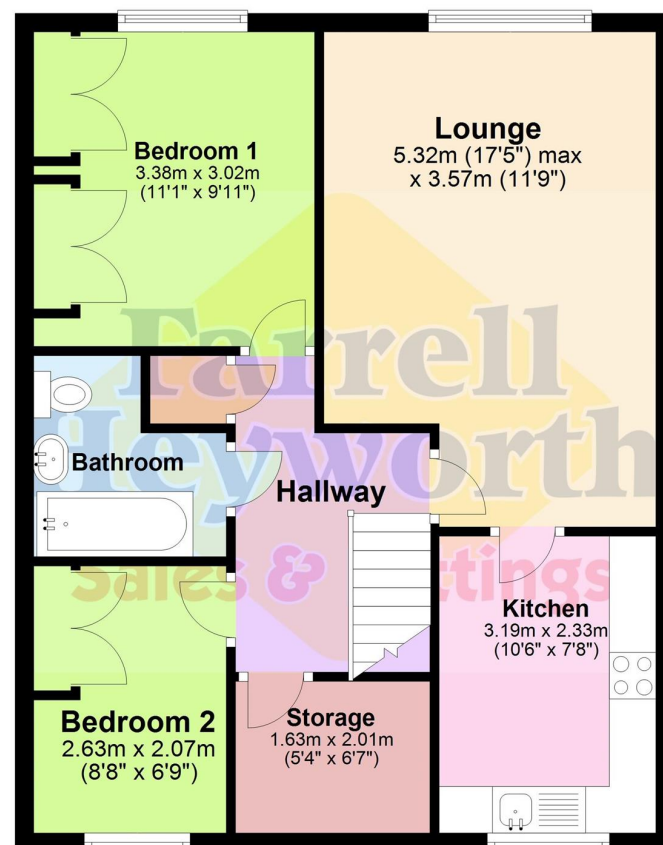
£97,000

Kingfisher Mews, Poulton
Le Fylde FY6

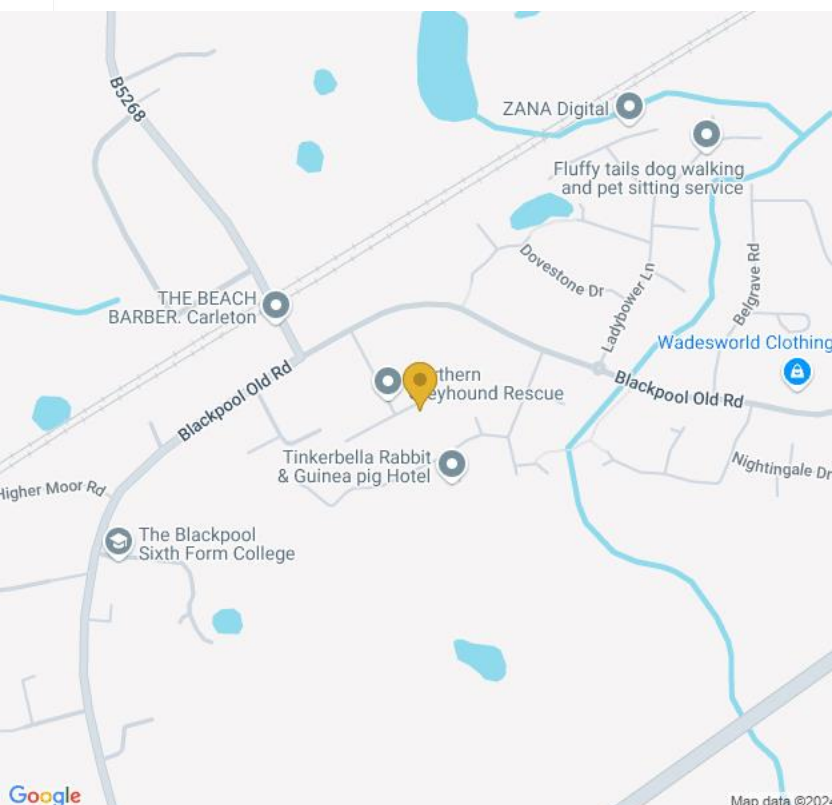
Basement



Ground Floor



- ****VIRTUAL VIEWING AVAILABLE. CLICK ON THE VIDEO TOUR ABOVE****
- **Two Bedroom First Floor Over 60s Apartment in Popular Area**
- **Spacious Lounge, Fitted Kitchen, Two Bedrooms, Bathroom**
- **Great Location, Close To Local Shops & Transport Links**
- **Please Call To Avoid Missing Out**





A Fantastic opportunity to purchase this two bedroom, first floor flat, the property is ready to move into and is situated in a popular residential location in Poulton Le Fylde.

On internal inspection the property briefly comprises; entrance hallway, a spacious lounge, fitted kitchen, bathroom, one double bedroom and one single. The property comes with allocated parking.

Viewings are highly recommended to appreciate this superb property on offer.

Tenure: Leasehold
Leasehold information: Terms: 999 years from 19 June 1989
Current Service/Maintenance Charge: £170.66 Per Calendar Month
Council Tax: Band B



