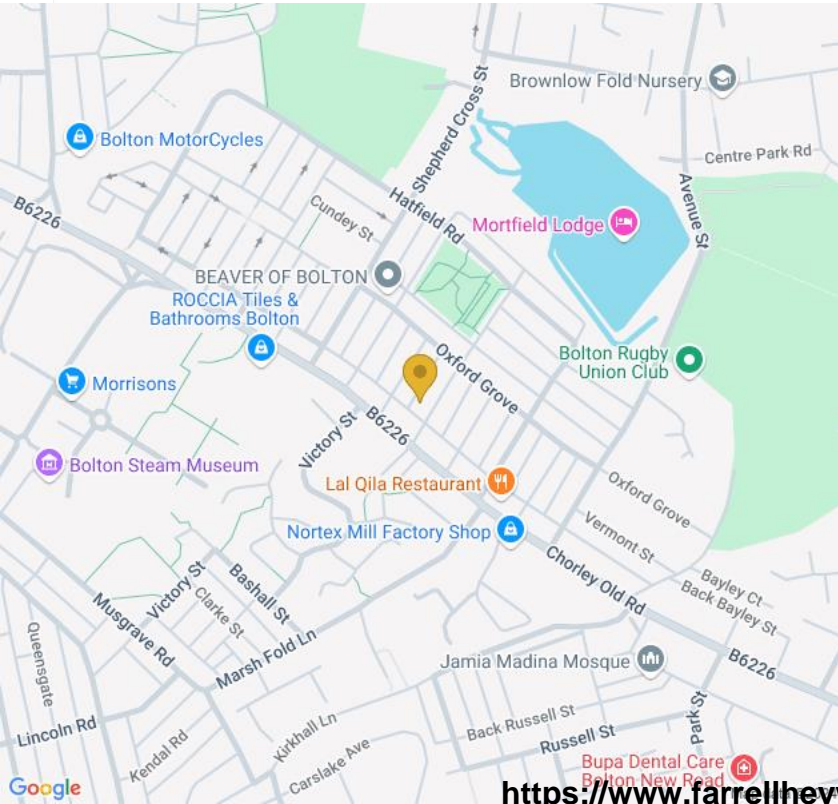


£100,000

Beatrice Road, Bolton BL1



**Westhoughton**  
**13/15 Cleveland Street**  
**Chorley PR7 1BH**

**Tel: 01942 303000**

**Email: [Westhoughton@farrellheyworth.co.uk](mailto:Westhoughton@farrellheyworth.co.uk)**

**<https://www.farrellheyworth.co.uk/about-us/branches/westhoughton/>**



- **\*\*VIRTUAL VIEWING AVAILABLE. CLICK ON THE VIDEO TOUR ABOVE\*\***
- **Two Bedroom Mid Terraced Home With No Onward Chain**
- **Situated In The Heaton On The Outskirts Of Bolton Town**
- **Modern Fitted Kitchen With Open Plan Diner**
- **Ideal First Time Buy**

Every care has been taken with the preparation of these Particulars but complete accuracy cannot be guaranteed. If there is any point, which is of particular importance to you, we will be pleased to check the information for you. These Particulars do not constitute a contract or part of a contract.

All measurements quoted are approximate and plans are for general guidance and are not to scale. The Fixtures, Fittings & Appliances have not been tested and therefore no guarantee can be given that they are in working order. Photographs are reproduced for general information and it cannot be inferred that any item shown is included in the sale.

Company Details - Farrell Heyworth Limited.

Registered Office: Second Floor Office Suite, The Pavillion, Church Street, Lancaster, LA1 1EX

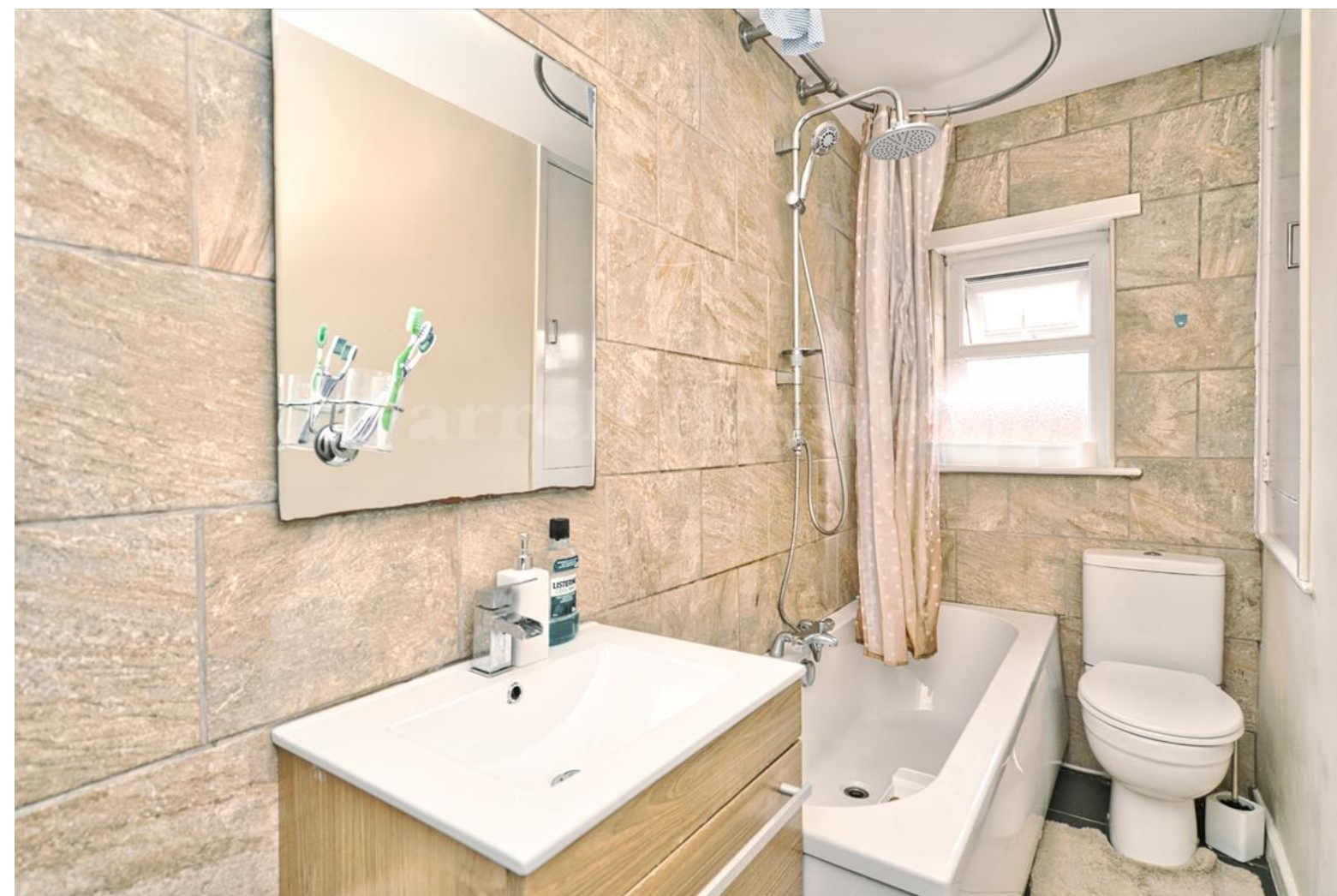
Registered in England No. 3798432

Directors CP Heyworth FNAEA, JF Collins, JR Collins, SW Penny FRICS, JAG Shellcross MNAEA, JA French

**EPC E**

[www.farrellheyworth.co.uk](http://www.farrellheyworth.co.uk)





Tenure: Freehold  
Council Tax: Band A

