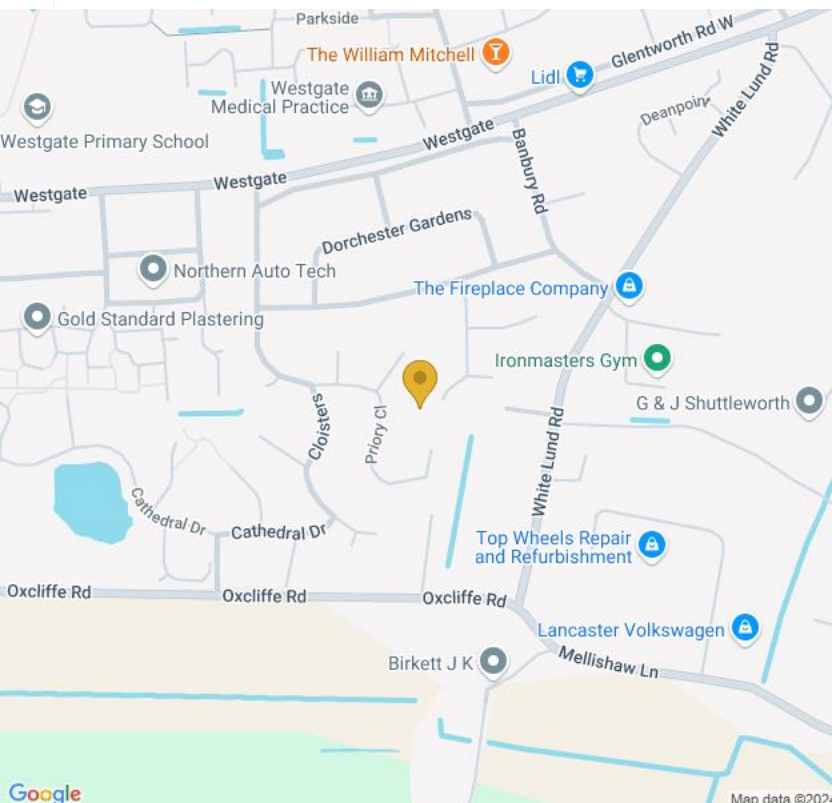
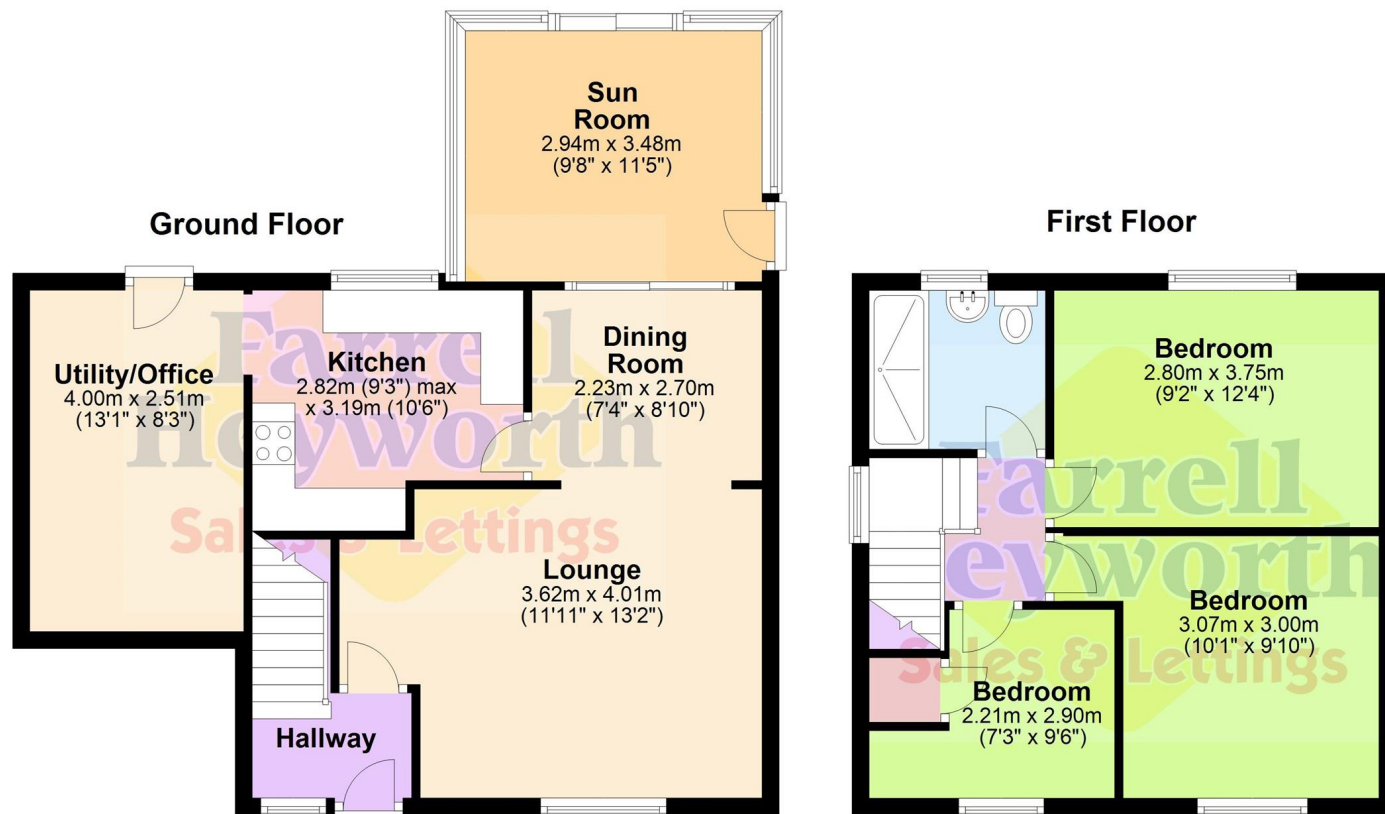


**£265,000**

Ellwood Avenue,  
Morecambe LA3



**Morecambe**  
**3-7 Victoria Street**  
**Morecambe LA4 4AE**

**Tel: 01524 832929**

**Email: morecambe@farrellheyworth.co.uk**

**<https://www.farrellheyworth.co.uk/morecambe>**



- **\*\*VIRTUAL VIEWING AVAILABLE. CLICK ON THE VIDEO TOUR ABOVE\*\***
- **Three Bedroom Detached Family Property With Drive**
- **Lounge, Dining Room, Kitchen, Utility, Sun Room Plus Rear Garden**
- **Three Good Size Bedrooms, Shower Room, Corner Plot**
- **Sought After Location, Close To Amenities & Transport Links**

Every care has been taken with the preparation of these Particulars but complete accuracy cannot be guaranteed. If there is any point, which is of particular importance to you, we will be pleased to check the information for you. These Particulars do not constitute a contract or part of a contract.

All measurements quoted are approximate and plans are for general guidance and are not to scale. The Fixtures, Fittings & Appliances have not been tested and therefore no guarantee can be given that they are in working order. Photographs are reproduced for general information and it cannot be inferred that any item shown is included in the sale.

Company Details - Farrell Heyworth Limited.

Registered Office: Second Floor Office Suite, The Pavillion, Church Street, Lancaster, LA1 1EX

Registered in England No. 3798432

Directors CP Heyworth FNAEA, JF Collins, JR Collins, SW Penny FRICS, JAG Shellcross MNAEA, JA French

**EPC D**

[www.farrellheyworth.co.uk](http://www.farrellheyworth.co.uk)





We are delighted to bring to the market this attractively priced three bedroom detached family home, the property is in a popular residential area and sits on a lovely corner plot.

Internally, the accommodation comprises hallway leading to lounge, dining room, conservatory, kitchen and utility/office space.

To the first floor are three good sized bedrooms and a family shower room.

Externally, there is a good sized garden and driveway.

Tenure: Freehold  
Council Tax: Band C

