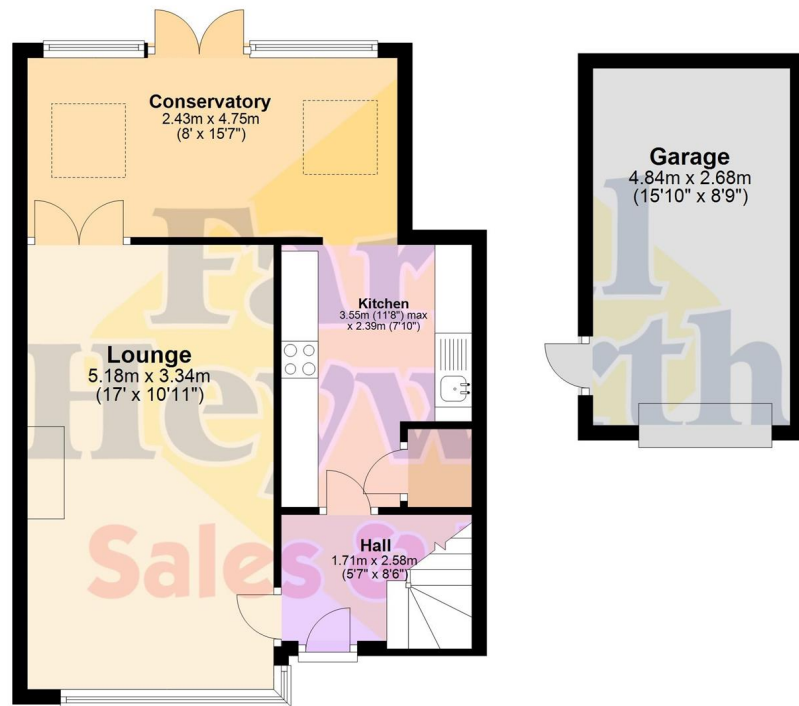


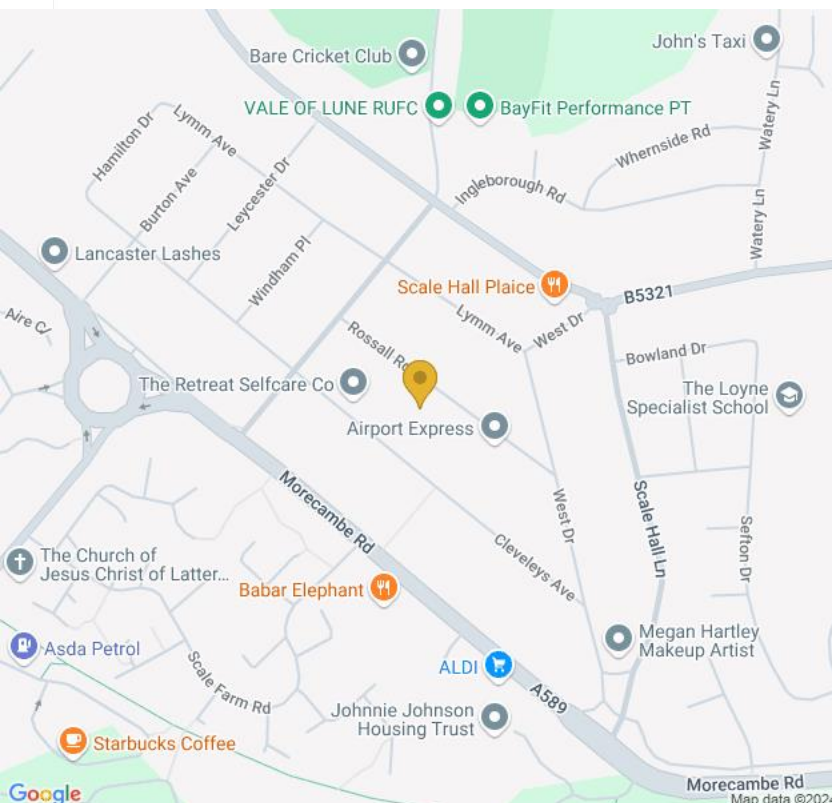
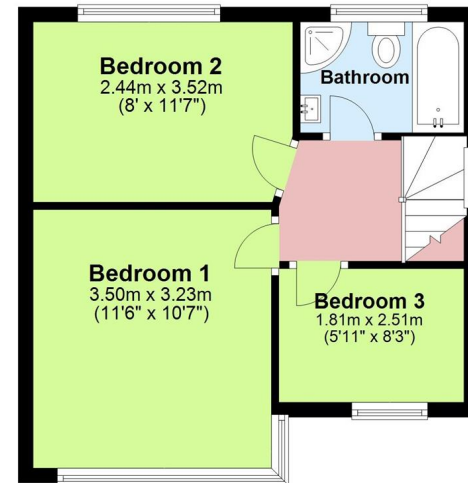
£220,000

Rossall Road, Lancaster
LA1

Ground Floor



First Floor



Lancaster
18 New Street
Lancaster LA1 1EG

Tel: 01524 842222
Email: lancaster@farrellheyworth.co.uk
<https://www.farrellheyworth.co.uk/lancaster>

Company Details - Farrell Heyworth Limited.

Registered Office: Second Floor Office Suite, The Pavillion, Church Street, Lancaster, LA1 1EX

Registered in England No. 3798432

Directors CP Heyworth FNAEA, JF Collins, JR Collins, SW Penny FRICS, JAG Shellcross MNAEA, JA French



- ****VIRTUAL VIEWING AVAILABLE CLICK ON THE VIDEO TOUR ABOVE****
- **Three Bedroom Semi-Detached Family Home With Driveway & Garage**
- **Spacious Lounge, Modern Kitchen, Conservatory, Family Bathroom**
- **Good Size Rear Garden, Driveway for Two Cars, Great Location**
- **Please Call To Avoid Missing Out**

Every care has been taken with the preparation of these Particulars but complete accuracy cannot be guaranteed. If there is any point, which is of particular importance to you, we will be pleased to check the information for you. These Particulars do not constitute a contract or part of a contract.

All measurements quoted are approximate and plans are for general guidance and are not to scale. The Fixtures, Fittings & Appliances have not been tested and therefore no guarantee can be given that they are in working order. Photographs are reproduced for general information and it cannot be inferred that any item shown is included in the sale.

EPC D

www.farrellheyworth.co.uk



We are pleased to present to the market this well presented three bedroom semi detached property, located in a popular area of Lancaster.

Internally the accommodation comprises of, a good size lounge, a modern, fitted Kitchen, and a spacious conservatory.

Stairs lead to the first floor, with three bedrooms, two doubles and a single, and a family bathroom

Externally is a driveway leading to a garage, with access to the rear garden which is private and well maintained

Tenure: Freehold
Council Tax: Band B

