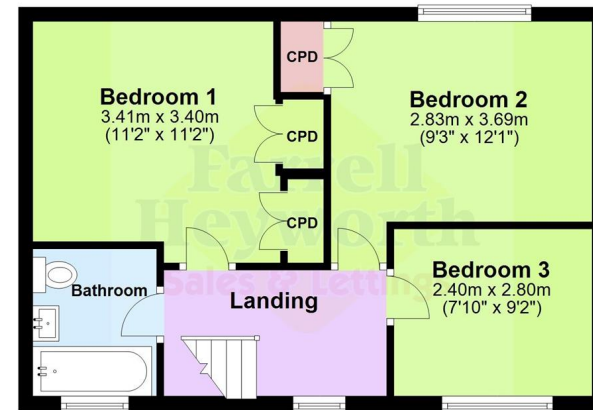
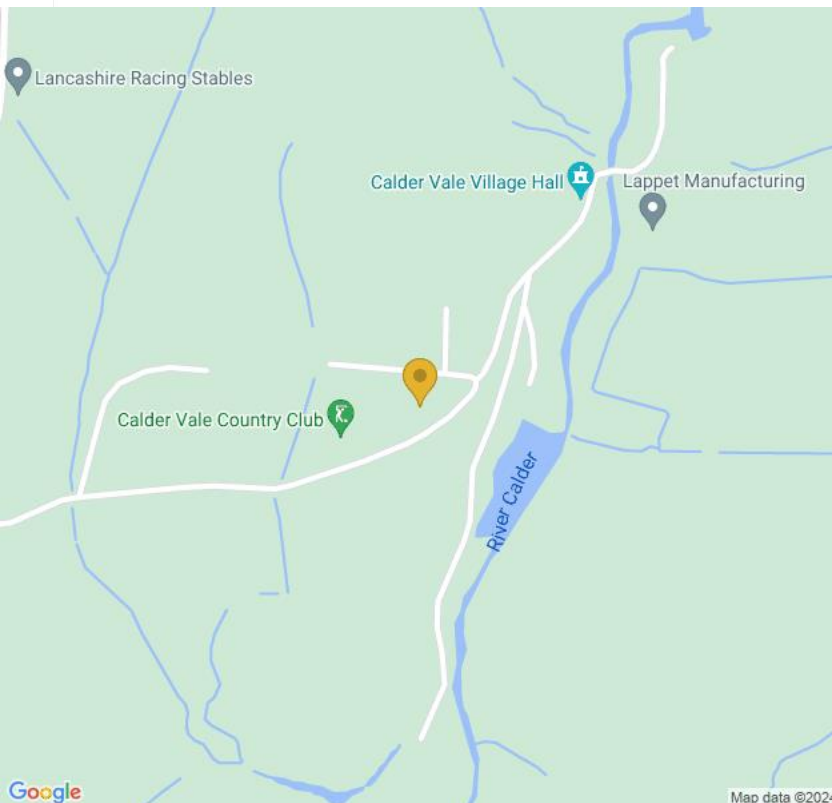


Ground Floor



First Floor



Garstang
7 The High Street
Garstang PR3 1FA

Tel: 01995 600666

Email: garstang@farrellheyworth.co.uk

<https://www.farrellheyworth.co.uk/garstang>

Company Details - Farrell Heyworth Limited.

Registered Office: Second Floor Office Suite, The Pavillion, Church Street, Lancaster, LA1 1EX

Registered in England No. 3798432

Directors CP Heyworth FNAEA, JF Collins, JR Collins, SW Penny FRICS, JAG Shellcross MNAEA, JA French

£240,000

**Burnside Avenue, Calder
Vale, Preston PR3**

**Farrell
Heyworth**
Sales & Lettings



- ****VIRTUAL VIEWING AVAILABLE CLICK ON THE VIDEO TOUR ABOVE****
- **Three Bedroom Semi Detached House In Cul De Sac Location**
- **Ample Driveway Parking, Enclosed Private Rear Garden**
- **Good Sized Lounge And Bespoke Fitted Kitchen Diner**
- **Semi Rural Village Location, Great Family Home**

Every care has been taken with the preparation of these Particulars but complete accuracy cannot be guaranteed. If there is any point, which is of particular importance to you, we will be pleased to check the information for you. These Particulars do not constitute a contract or part of a contract.

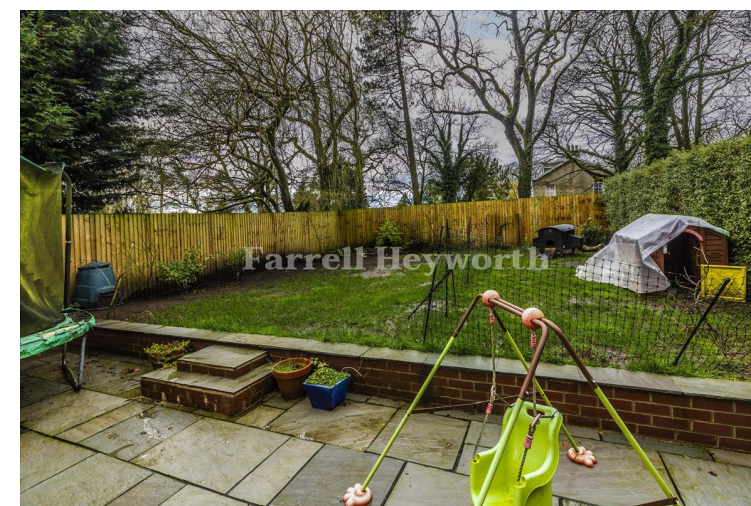
All measurements quoted are approximate and plans are for general guidance and are not to scale. The Fixtures, Fittings & Appliances have not been tested and therefore no guarantee can be given that they are in working order. Photographs are reproduced for general information and it cannot be inferred that any item shown is included in the sale.

EPC F

www.farrellheyworth.co.uk



Tenure: Freehold
Council Tax: Band B



No sale no fee conveyancing
Dedicated conveyancer
Speedy completions

We can search 1,000s of mortgages for you

1 adviser - 80 lenders - 10,000 mortgage schemes!

 **Mortgage Advice Bureau**

Call: 0800 389 1666
Online: www.mortgageadvicebureau.com/farrelltheyworth

Your home may be repossessed if you do not keep up repayments on your mortgage. There will be a fee for mortgage advice. The actual amount you pay will depend upon your circumstances.

MAB





