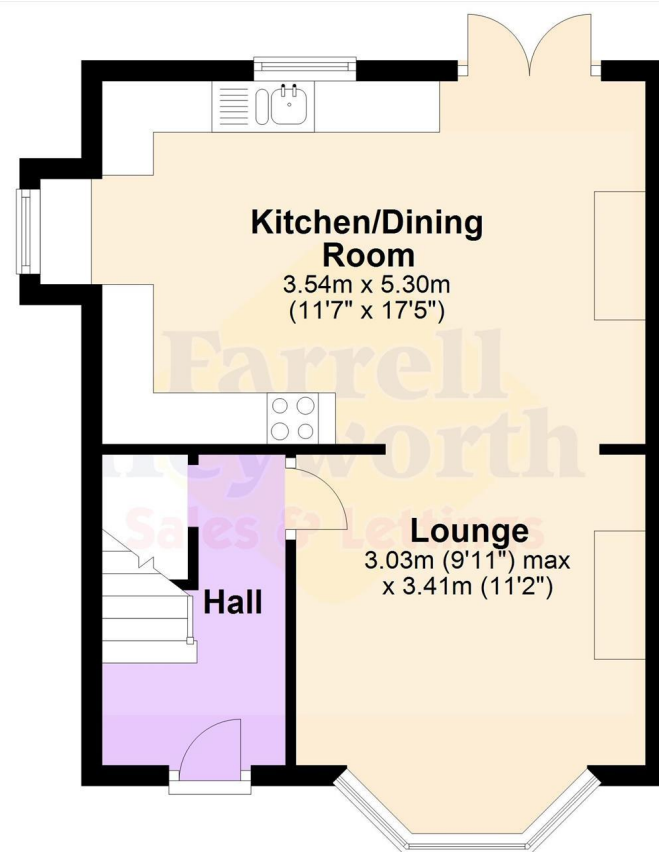
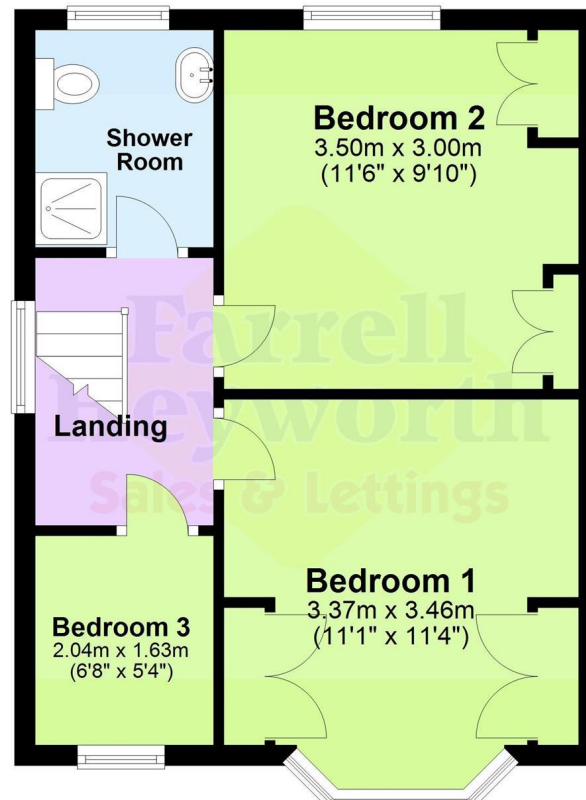


O.I.R.O
£240,000

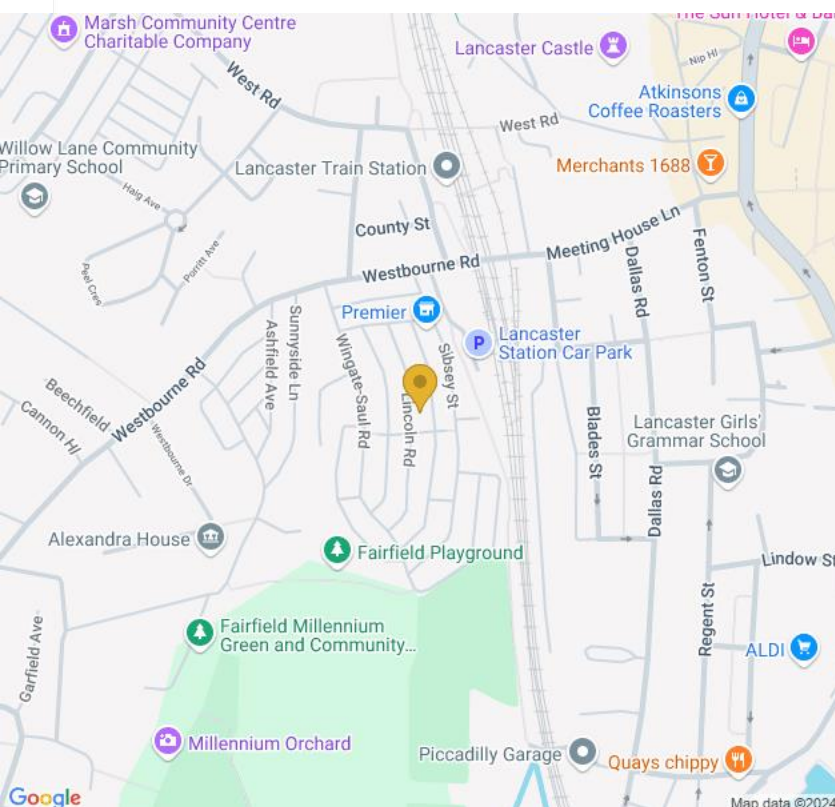
LA1



Ground Floor



First Floor



Lancaster
18 New Street
Lancaster LA1 1EG

Tel: 01524 842222

Email: lancaster@farrellheyworth.co.uk

<https://www.farrellheyworth.co.uk/lancaster>



- ****VIRTUAL VIEWING AVAILABLE. CLICK ON THE VIDEO TOUR ABOVE****
- **Three Bedroom Semi-Detached Home Convenient For City Centre**
- **Open Plan, Stylish, Modern Kitchen Diner & integrated Appliances**
- **Close To Local Shops, Transport Links & Residents Parking**
- **Close To Fairfield Nature Reserve & Local Allotments**

Every care has been taken with the preparation of these Particulars but complete accuracy cannot be guaranteed. If there is any point, which is of particular importance to you, we will be pleased to check the information for you. These Particulars do not constitute a contract or part of a contract.

All measurements quoted are approximate and plans are for general guidance and are not to scale. The Fixtures, Fittings & Appliances have not been tested and therefore no guarantee can be given that they are in working order. Photographs are reproduced for general information and it cannot be inferred that any item shown is included in the sale.

Company Details - Farrell Heyworth Limited.

Registered Office: Second Floor Office Suite, The Pavillion, Church Street, Lancaster, LA1 1EX

Registered in England No. 3798432

Directors CP Heyworth FNAEA, JF Collins, JR Collins, SW Penny FRICS, JAG Shellcross MNAEA, JA French

EPC C

www.farrellheyworth.co.uk



We are pleased to present to the market this beautifully presented semi-detached home, located in a popular area of Lancaster, close to local schools, shops and transport links.

Internally the accommodation comprises an entrance hallway which leads to an open plan living space with a bright lounge and a fantastic kitchen and dining area.

Stairs lead to the first floor, with three bedrooms and a modern shower room.

The rear garden is well maintained and is a good size.

Convenient for the train station on the West Coast main line and for all city centre amenities.

Tenure: Freehold
Council Tax: Band B





