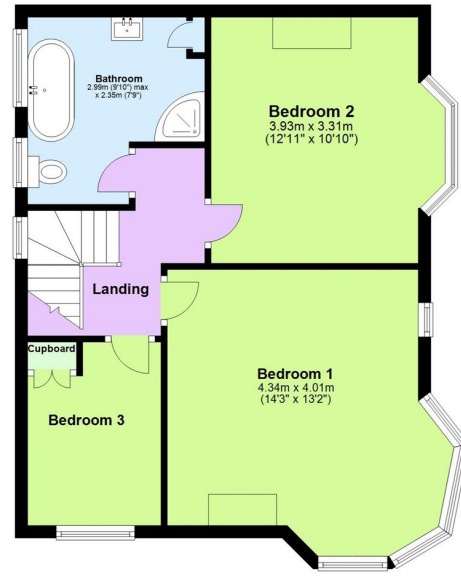
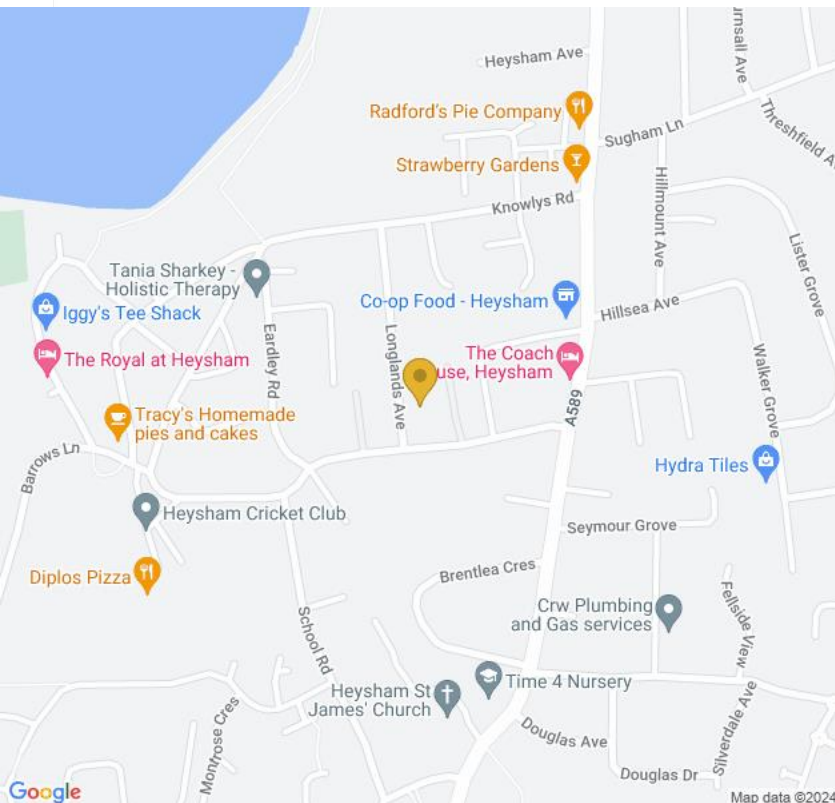




Ground Floor



First Floor



Morecambe
3-7 Victoria Street
Morecambe LA4 4AE

Tel: 01524 832929

Email: morecambe@farrellheyworth.co.uk

<https://www.farrellheyworth.co.uk/morecambe>

Company Details - Farrell Heyworth Limited.

Registered Office: Second Floor Office Suite, The Pavillion, Church Street, Lancaster, LA1 1EX

Registered in England No. 3798432

Directors CP Heyworth FNAEA, JF Collins, JR Collins, SW Penny FRICS, JAG Shellcross MNAEA, JA French

£450,000

Longlands Crescent,
 Heysham, Morecambe LA3

Farrell
Heyworth
Sales & Lettings



- ***Open House Saturday The 18th of May 9am - 10am - Just Turn Up***
- **Three Bedroom Detached Period Home - Distinctive Corner Property**
- **Range Of Traditional Features And Modern Facilities**
- **Purpose-Built Outspace With Office/Work Room And Utility**
- **Offered With No Onward Chain**

EPC D

www.farrellheyworth.co.uk

Every care has been taken with the preparation of these Particulars but complete accuracy cannot be guaranteed. If there is any point, which is of particular importance to you, we will be pleased to check the information for you. These Particulars do not constitute a contract or part of a contract.

All measurements quoted are approximate and plans are for general guidance and are not to scale. The Fixtures, Fittings & Appliances have not been tested and therefore no guarantee can be given that they are in working order. Photographs are reproduced for general information and it cannot be inferred that any item shown is included in the sale.



Presenting a three bedroom detached period house, this corner building boasts an impressive exterior with grass surrounding the front, highlighting its unique position. The property features period characteristics, including striking bay windows in the reception, dining room, master bedroom, and bedroom two, adding charm and character to the home.

Inside the property benefits from traditional features with wooden flooring stain glass windows, covings and doors on the ground floor which enhance the traditional ambience, while a downstairs toilet adds convenience. The modern kitchen offers an open plan layout, providing a contemporary living space. A conservatory adds extra room for relaxation or entertainment.

To the first floor there are rooms which enjoy elevated views over roof tops to Morecambe Bay and the Lakeland fells. Additionally, a modern bathroom with a walk-in shower caters to modern living needs.

The house is a distinctive historic address and was formerly a Police House.

Outside, a purpose-built out house includes a utility room and an office ideal for home working or studying. The property also boasts a good size and private rear patio garden and a long driveway and providing ample parking space. Situated on this corner plot there are surrounding gardens to three sides.

The area has superb access to the M6 motorway following the opening of the Bay Gateway which provides enhanced access into Preston, Manchester, Lake District and Yorkshire.

The Morecambe and Heysham area is currently under review for potential construction of Eden project north which we believe this will enhance the area, increase demand for properties in this area.

Longlands Crescent enjoys direct access to a good range of nearby amenities on Heysham Road with further access to nearby schools, health centre and Co-Op store. There is also a village post office and library. There are road links and regular bus services which provides access into Morecambe town centre and nearby Lancaster city. The property is close to the coastline and has attractive walks into Heysham village with the popular Royal Public House and a range of cafés.

The property offers spacious and versatile accommodation in a sought after residential position.





