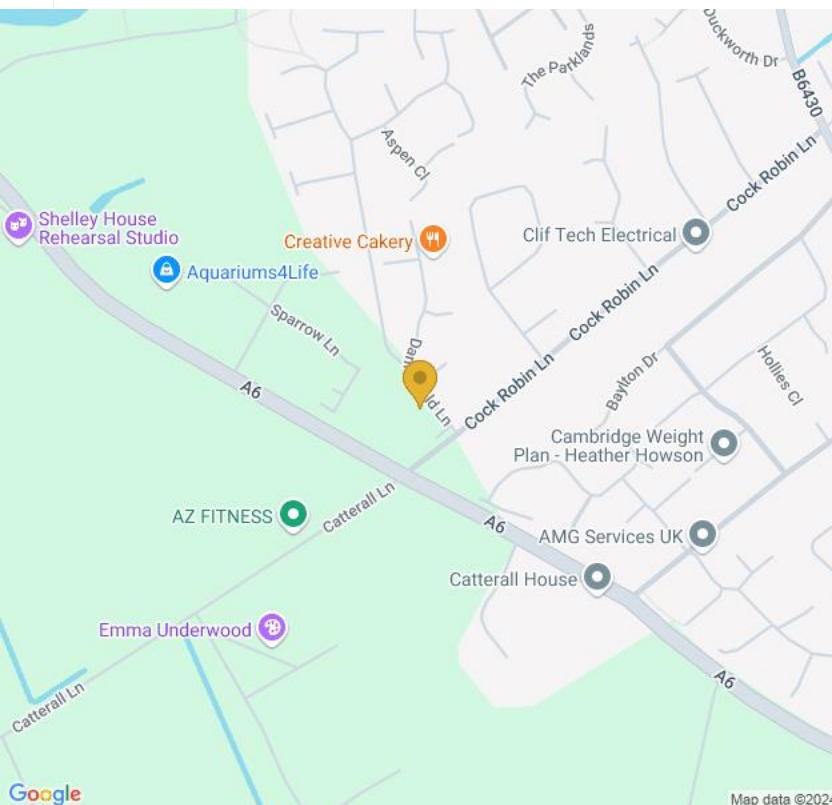
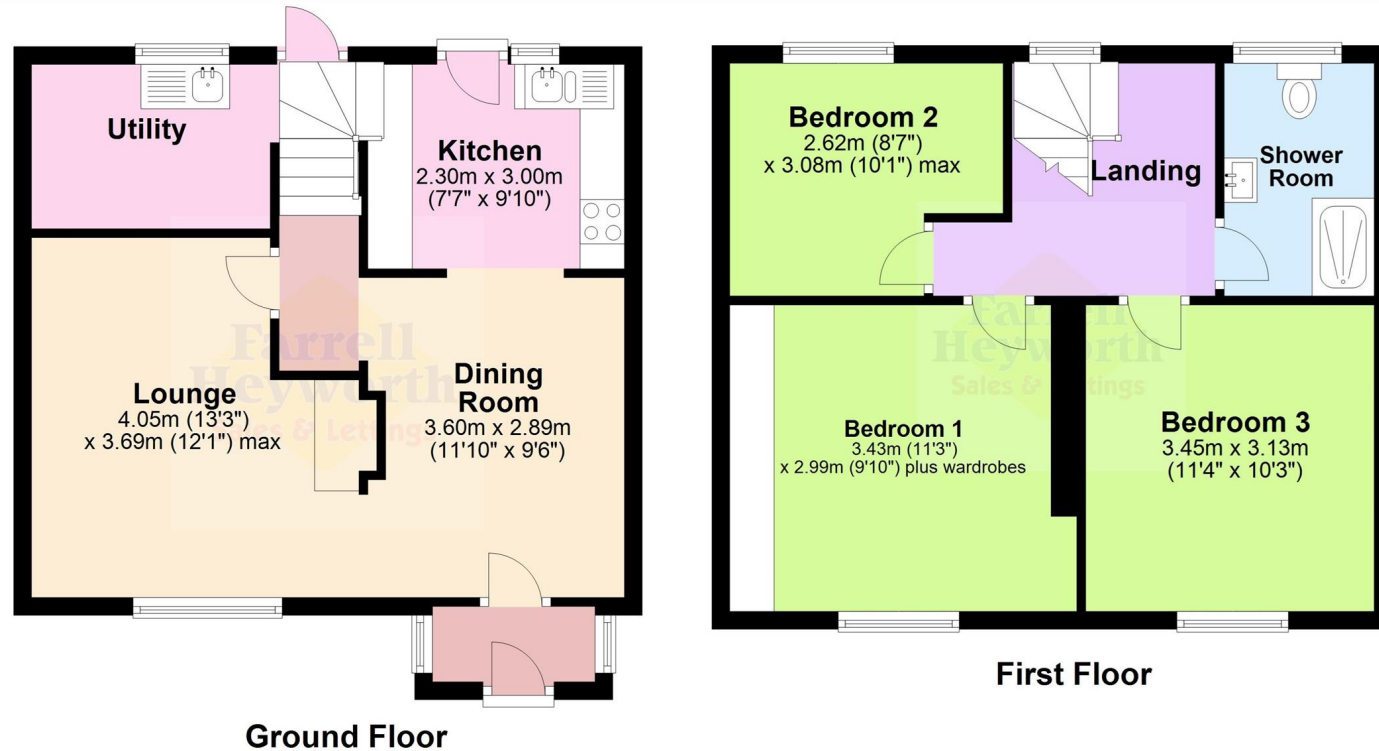


**£220,000**

Cock Robin Lane, Catterall,  
Preston PR3



**Garstang  
7 The High Street  
Garstang PR3 1FA**

**Tel: 01995 600666**

**Email: [garstang@farrellheyworth.co.uk](mailto:garstang@farrellheyworth.co.uk)  
<https://www.farrellheyworth.co.uk/garstang>**



- **\*\*VIRTUAL VIEWING AVAILABLE CLICK ON THE VIDEO TOUR ABOVE\*\***
- **Character Garden Fronted Mid Terraced Cottage In Popular Location**
- **Three Good Sized Bedrooms, Lounge & Separate Dining Room.**
- **Modern Kitchen & Shower Room, Rear Garden & Utility Room**
- **Deceptive Sized Accommodation, Viewing Recommended**

Every care has been taken with the preparation of these Particulars but complete accuracy cannot be guaranteed. If there is any point, which is of particular importance to you, we will be pleased to check the information for you. These Particulars do not constitute a contract or part of a contract.

All measurements quoted are approximate and plans are for general guidance and are not to scale. The Fixtures, Fittings & Appliances have not been tested and therefore no guarantee can be given that they are in working order. Photographs are reproduced for general information and it cannot be inferred that any item shown is included in the sale.

Company Details - Farrell Heyworth Limited.

Registered Office: Second Floor Office Suite, The Pavillion, Church Street, Lancaster, LA1 1EX

Registered in England No. 3798432

Directors CP Heyworth FNAEA, JF Collins, JR Collins, SW Penny FRICS, JAG Shellcross MNAEA, JA French

**EPC D**

[www.farrellheyworth.co.uk](http://www.farrellheyworth.co.uk)





Tenure: Freehold  
Council Tax: Band C



**We can search 1,000s of mortgages for you**

**1 adviser - 80 lenders - 10,000 mortgage schemes!**

 **Mortgage Advice Bureau**

Call: 0800 389 1666  
Online: [www.mortgageadvicebureau.com/farrelltheyworth](http://www.mortgageadvicebureau.com/farrelltheyworth)

Your home may be repossessed if you do not keep up repayments on your mortgage. There will be a fee for mortgage advice. The actual amount you pay will depend upon your circumstances.

MAB 6451



