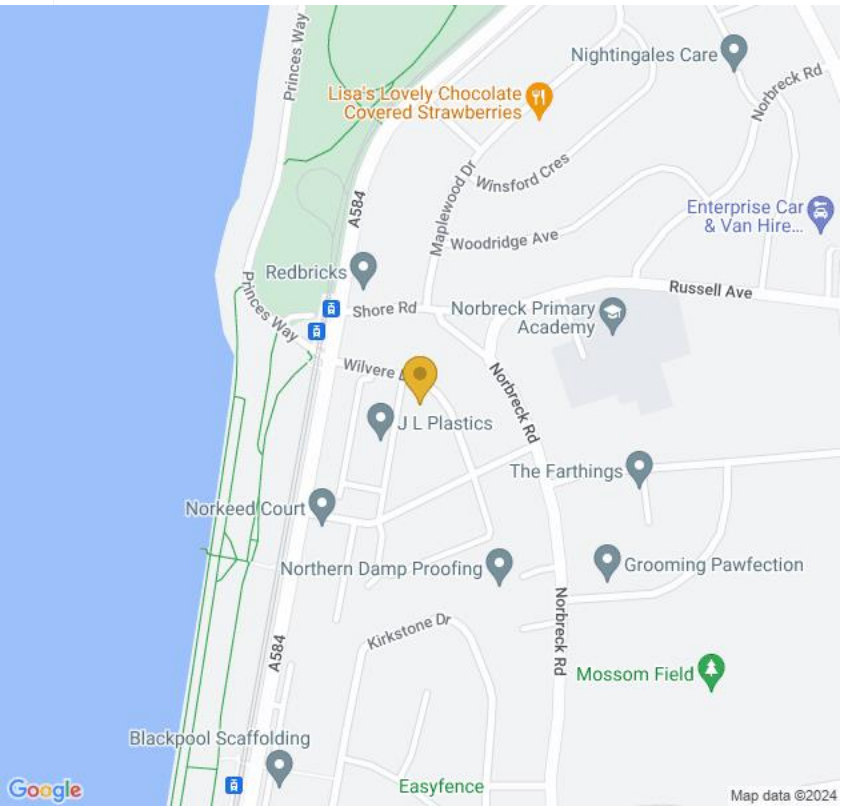
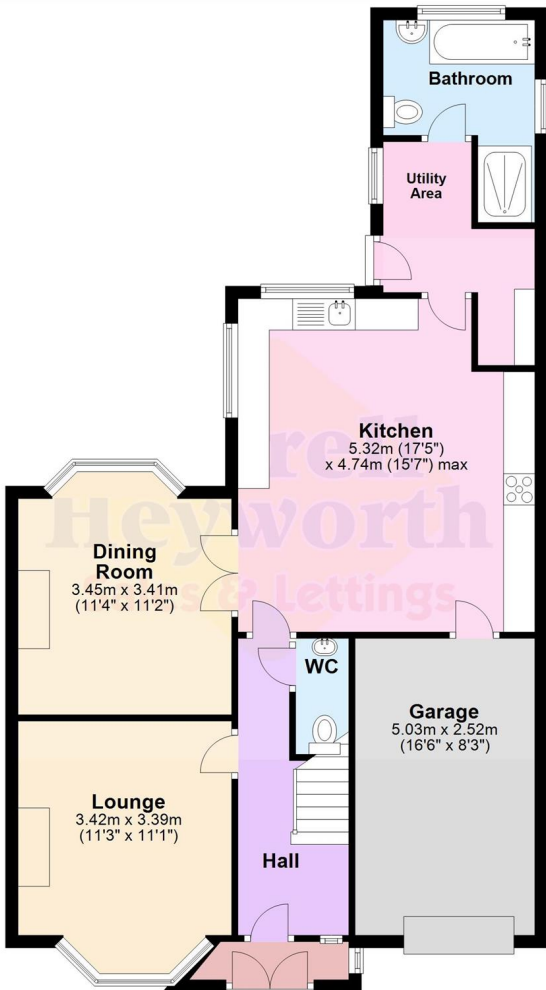


£220,000

Wilvere Drive, Thornton
Cleveleys FY5



**Cleveleys
Landmark House
5a Cleveleys Avenue FY5 2UH**

**Tel: 01253 858200
Email: cleveleys@farrellheyworth.co.uk
<https://www.farrellheyworth.co.uk/cleveleys>**



- ****VIRTUAL VIEWING AVAILABLE. CLICK ON THE VIDEO TOUR ABOVE****
- **Five Bedroom Semi Detached Family Home**
- **Two Reception Rooms, Spacious Fitted Kitchen, GF Bathroom.**
- **Five Bedrooms and First Floor Shower Room**
- **Great Location, Close To Local Shops, Schools & Transport Links**

Every care has been taken with the preparation of these Particulars but complete accuracy cannot be guaranteed. If there is any point, which is of particular importance to you, we will be pleased to check the information for you. These Particulars do not constitute a contract or part of a contract.

All measurements quoted are approximate and plans are for general guidance and are not to scale. The Fixtures, Fittings & Appliances have not been tested and therefore no guarantee can be given that they are in working order. Photographs are reproduced for general information and it cannot be inferred that any item shown is included in the sale.

Company Details - Farrell Heyworth Limited.

Registered Office: Second Floor Office Suite, The Pavillion, Church Street, Lancaster, LA1 1EX

Registered in England No. 3798432

Directors CP Heyworth FNAEA, JF Collins, JR Collins, SW Penny FRICS, JAG Shellcross MNAEA, JA French

EPC D

www.farrellheyworth.co.uk



We are pleased to present to the market this spacious, extended five bedroom semi detached property, located in a popular area of Cleveleys.

Internally the accommodation comprises lounge and dining room both with bay windows, a spacious family dining kitchen, utility area, downstairs bathroom/wc and cloakroom/wc.

Stairs lead to the first comprising five bedrooms, two with bay windows, and a shower room/wc.

Externally is a rear garden which is private and a good size, integral garage and driveway parking.

This is a delightful property and would make a perfect family home, viewing is highly recommended.

Tenure: Freehold
Council Tax: Band C





