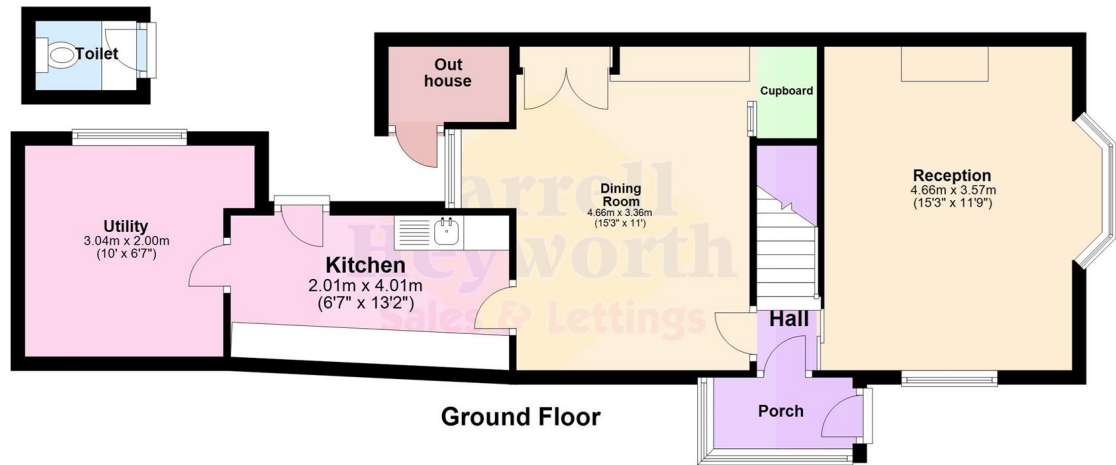
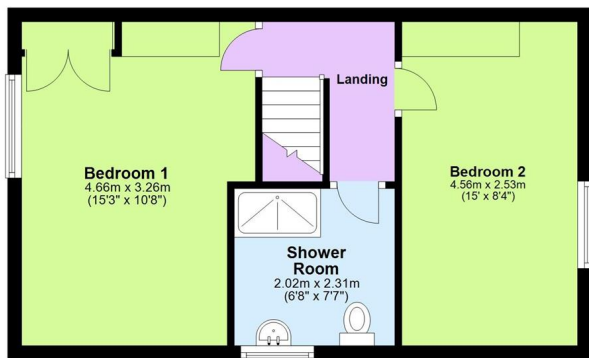


O.I.R.O
£179,000

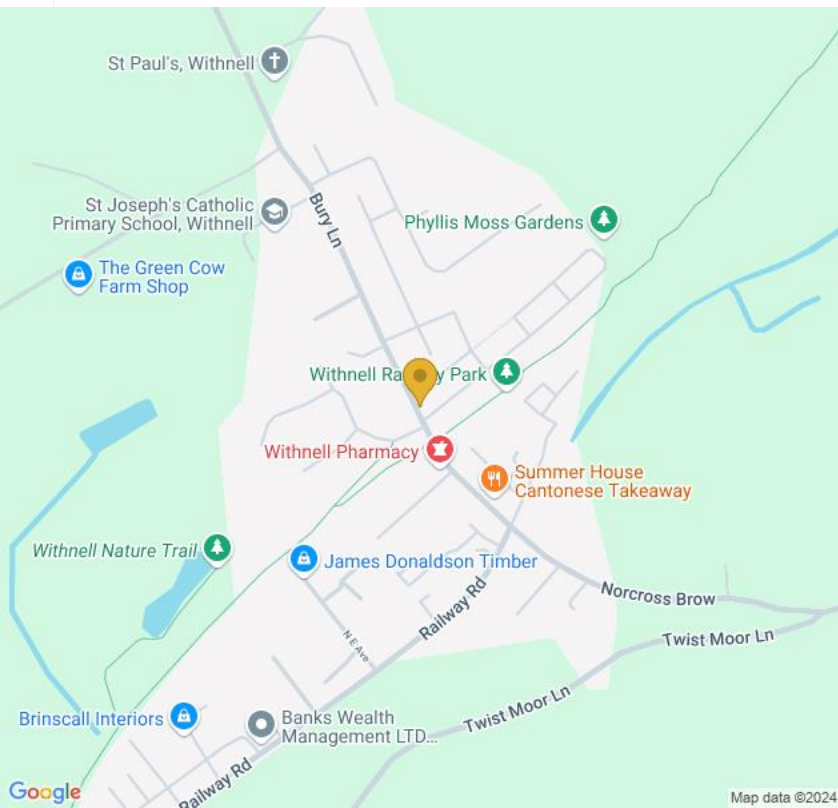
Pleasant View, Withnell,
Chorley PR6



Ground Floor



First Floor



**Farrell
Heyworth**
Sales & Lettings

Chorley
13/15 Cleveland Street
Chorley PR7 1BH

Tel: 01257 275231
Email: chorley@farrellheyworth.co.uk
<https://www.farrellheyworth.co.uk/chorley>

Company Details - Farrell Heyworth Limited.

Registered Office: Second Floor Office Suite, The Pavillion, Church Street, Lancaster, LA1 1EX

Registered in England No. 3798432

Directors CP Heyworth FNAEA, JF Collins, JR Collins, SW Penny FRICS, JAG Shellcross MNAEA, JA French



- **VIRTUAL VIEWING AVAILABLE. CLICK ON THE VIDEO TOUR ABOVE****
- Two Bedroom End of Terrace Corner House in Withnell, Chorley**
- Reception Room, Dining Room, Kitchen, Utility Room, Out House**
- Two Double Bedrooms with Fitted Wardrobes**
- Period House with Fittings like Fireplaces, Needs Updating**

Every care has been taken with the preparation of these Particulars but complete accuracy cannot be guaranteed. If there is any point, which is of particular importance to you, we will be pleased to check the information for you. These Particulars do not constitute a contract or part of a contract.

All measurements quoted are approximate and plans are for general guidance and are not to scale. The Fixtures, Fittings & Appliances have not been tested and therefore no guarantee can be given that they are in working order. Photographs are reproduced for general information and it cannot be inferred that any item shown is included in the sale.

EPC E

www.farrellheyworth.co.uk



Presenting a two-bedroom end-of-terrace corner house in Withnell, Chorley.

This property comprises a reception room, dining room, kitchen and a utility room. Additionally, there is an out house providing extra space. The two double bedrooms both feature fitted wardrobes, enhancing storage options.

This period house showcases character with period fittings such as fireplaces in the reception and dining rooms. While retaining its historical charm, the property is in need of updating and modernising, presenting an opportunity for those looking to bring a contemporary touch to a period home in Withnell, Chorley.

Tenure: Freehold
Council Tax: Band B





