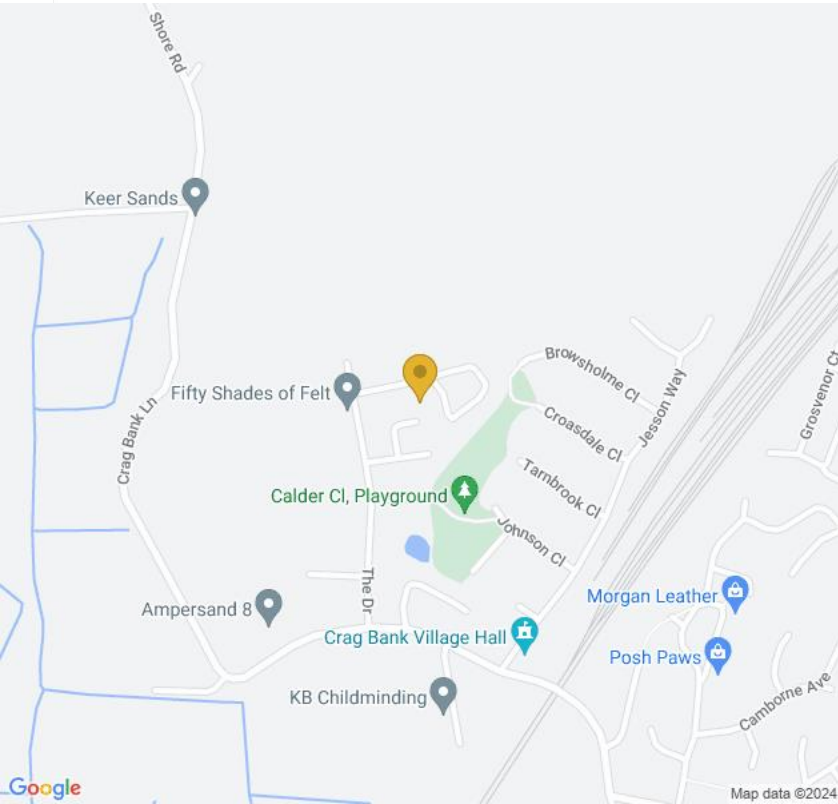


**O.I.R.O**  
**£85,000**

Hunting Hill Caravan Park,  
Carnforth LA5



**Carnforth**  
**18 New Street**  
**Lancaster LA1 1EG**

**Tel: 01524 736777**  
**Email: [carnforth@farrellheyworth.co.uk](mailto:carnforth@farrellheyworth.co.uk)**  
**<https://www.farrellheyworth.co.uk/carnforth>**



- **\*\*VIRTUAL VIEWING AVAILABLE. CLICK ON THE VIDEO TOUR ABOVE\*\***
- **Two Bedroom Park Home On A Popular Site In Crag Bank**
- **Open Plan Lounge & Kitchen, Two Bedrooms, En Suite To Master**
- **Located Close To Shops, Amenities & Train Station**
- **No Chain Delay Please Call To Avoid Missing Out**

Every care has been taken with the preparation of these Particulars but complete accuracy cannot be guaranteed. If there is any point, which is of particular importance to you, we will be pleased to check the information for you. These Particulars do not constitute a contract or part of a contract.

All measurements quoted are approximate and plans are for general guidance and are not to scale. The Fixtures, Fittings & Appliances have not been tested and therefore no guarantee can be given that they are in working order. Photographs are reproduced for general information and it cannot be inferred that any item shown is included in the sale.

Company Details - Farrell Heyworth Limited.

Registered Office: Second Floor Office Suite, The Pavillion, Church Street, Lancaster, LA1 1EX

Registered in England No. 3798432

Directors CP Heyworth FNAEA, JF Collins, JR Collins, SW Penny FRICS, JAG Shellcross MNAEA, JA French

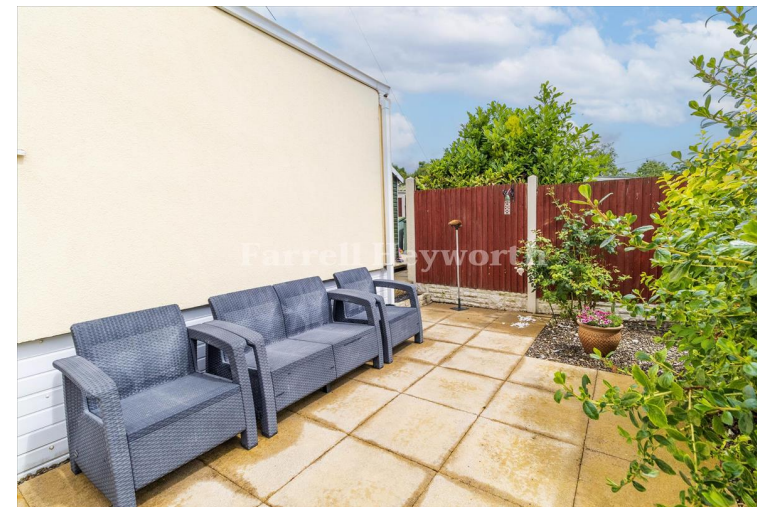
**Pending EPC**

[www.farrellheyworth.co.uk](http://www.farrellheyworth.co.uk)





Council Tax: Band A



**We can search  
1,000s of  
mortgages  
for you**

**1 adviser - 80 lenders - 10,000 mortgage schemes!**



**Mortgage  
Advice Bureau**

Call: 0800 389 1666  
Online: [www.mortgageadvicebureau.com/farrelltheyworth](http://www.mortgageadvicebureau.com/farrelltheyworth)

**Your home may be repossessed if you do not keep up repayments on your mortgage. There will be a fee for mortgage advice. The actual amount you pay will depend upon your circumstances.**

**MAB 6451**



