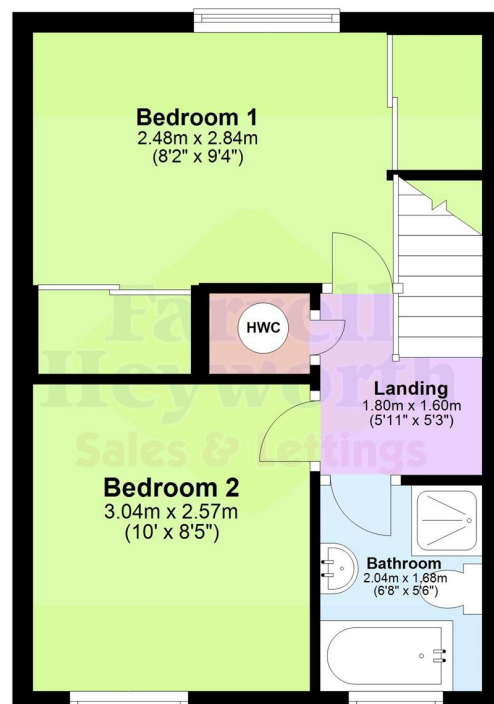
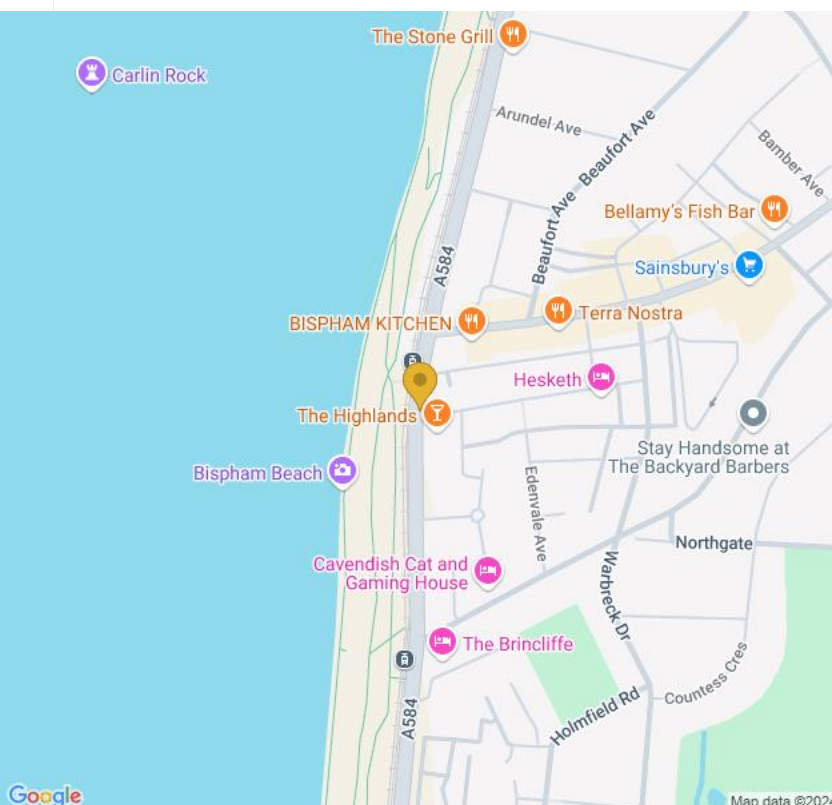




Ground Floor



First Floor



**Cleveleys
Landmark House
5a Cleveleys Avenue FY5 2UH**

**Tel: 01253 858200
Email: cleveleys@farrellheyworth.co.uk
<https://www.farrellheyworth.co.uk/cleveleys>**

Company Details - Farrell Heyworth Limited.

Registered Office: Second Floor Office Suite, The Pavillion, Church Street, Lancaster, LA1 1EX

Registered in England No. 3798432

Directors CP Heyworth FNAEA, JF Collins, JR Collins, SW Penny FRICS, JAG Shellcross MNAEA, JA French

£110,000

Queens Promenade,
Blackpool FY2

**Farrell
Heyworth**
Sales & Lettings



- ****VIRTUAL VIEWING AVAILABLE. CLICK ON THE VIDEO TOUR ABOVE****
- **Two Bedroom Duplex Apartment On Queens Promenade**
- **Open Lounge Dining Room, Kitchen, Garage, Balcony With Sea Views**
- **Great Location, Close To Local Shops & Transport Links**
- **Please Call To Avoid Missing Out**

Every care has been taken with the preparation of these Particulars but complete accuracy cannot be guaranteed. If there is any point, which is of particular importance to you, we will be pleased to check the information for you. These Particulars do not constitute a contract or part of a contract.

All measurements quoted are approximate and plans are for general guidance and are not to scale. The Fixtures, Fittings & Appliances have not been tested and therefore no guarantee can be given that they are in working order. Photographs are reproduced for general information and it cannot be inferred that any item shown is included in the sale.

EPC D

www.farrellheyworth.co.uk



A photograph of a white, horizontally-ribbed garage door. The door has a small, dark, rectangular window at the top. It is set against a brick wall. The door shows signs of wear, including rust and peeling paint. The ground in front of the door is concrete.





