

**£129,950**

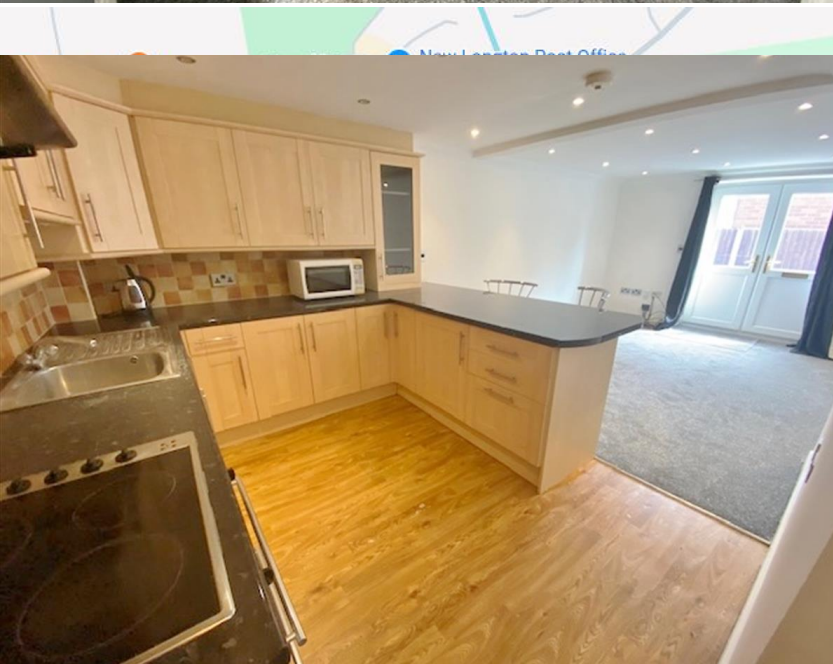
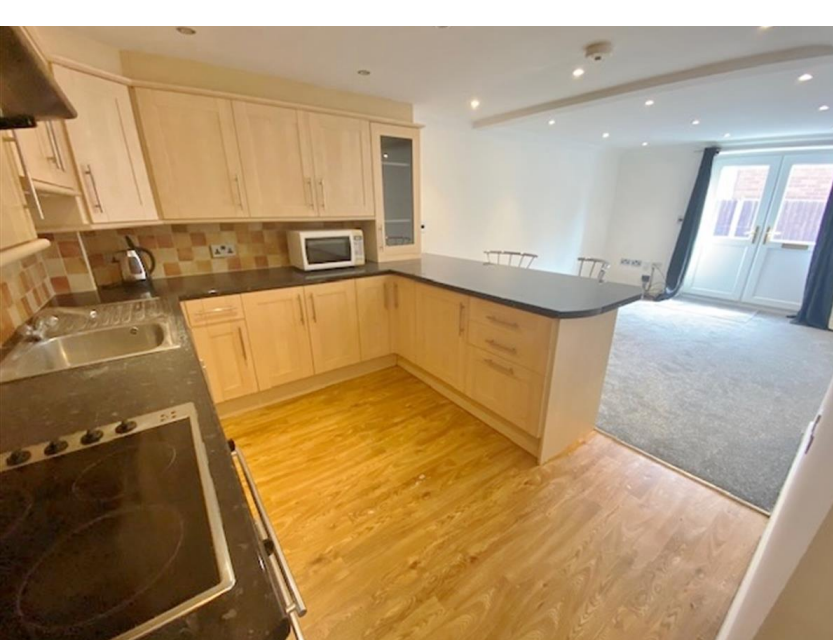
Mill Lodge, New Longton,  
Preston PR4

**Farrell  
Heyworth**  
Sales & Lettings



- **\*\*VIRTUAL VIEWING AVAILABLE. CLICK ON THE VIDEO TOUR ABOVE\*\***
- **Fabulous Modern Duplex Apartment**
- **Open Plan Lounge and Dining Kitchen**
- **Versatile Layout with Potential for Two Bedrooms**
- **Village Location, Call for More info**





This gorgeous DUPLEX apartment is situated in a quiet village location with excellent road links to Preston and Southport.

The property can be accessed via a communal entrance or a private entrance into the lounge and comprises a lovely open plan living room with breakfast bar onto a fantastic sized kitchen. There is also an under stairs store cupboard.

The first floor offers a versatile arrangement that could be used as two bedrooms or a master bedroom with dressing area. There is also a lovely four piece bathroom.

The property has an allocated parking space to the front.

Property Measurements  
Open Plan Living Room/Kitchen  
7.02m x 4.05m

Tenure: Leasehold  
Leasehold information: Terms: 999 years from  
1st January 2003  
Current Ground Rent: TBC  
Current Service/Maintenance Charges: TBC

Council Tax: Band A



**Penwortham**  
**309 Garstang Road**  
**Preston PR2 9XJ**

**Tel: 01772 752666**

**Email: [penwortham@farrellheyworth.co.uk](mailto:penwortham@farrellheyworth.co.uk)**  
**<https://www.farrellheyworth.co.uk/penwortham>**

Company Details - Farrell Heyworth Limited.

Registered Office: Second Floor Office Suite, The Pavillion, Church Street, Lancaster, LA1 1EX

Registered in England No. 3798432

Directors CP Heyworth FNAEA, JF Collins, JR Collins, SW Penny FRICS, JAG Shellcross MNAEA, JA French