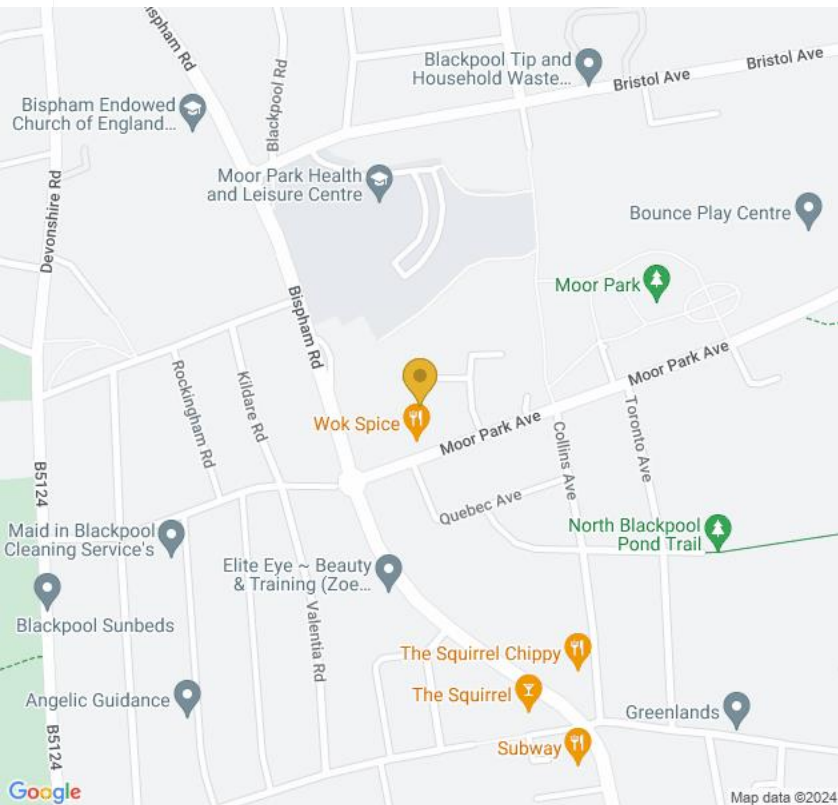
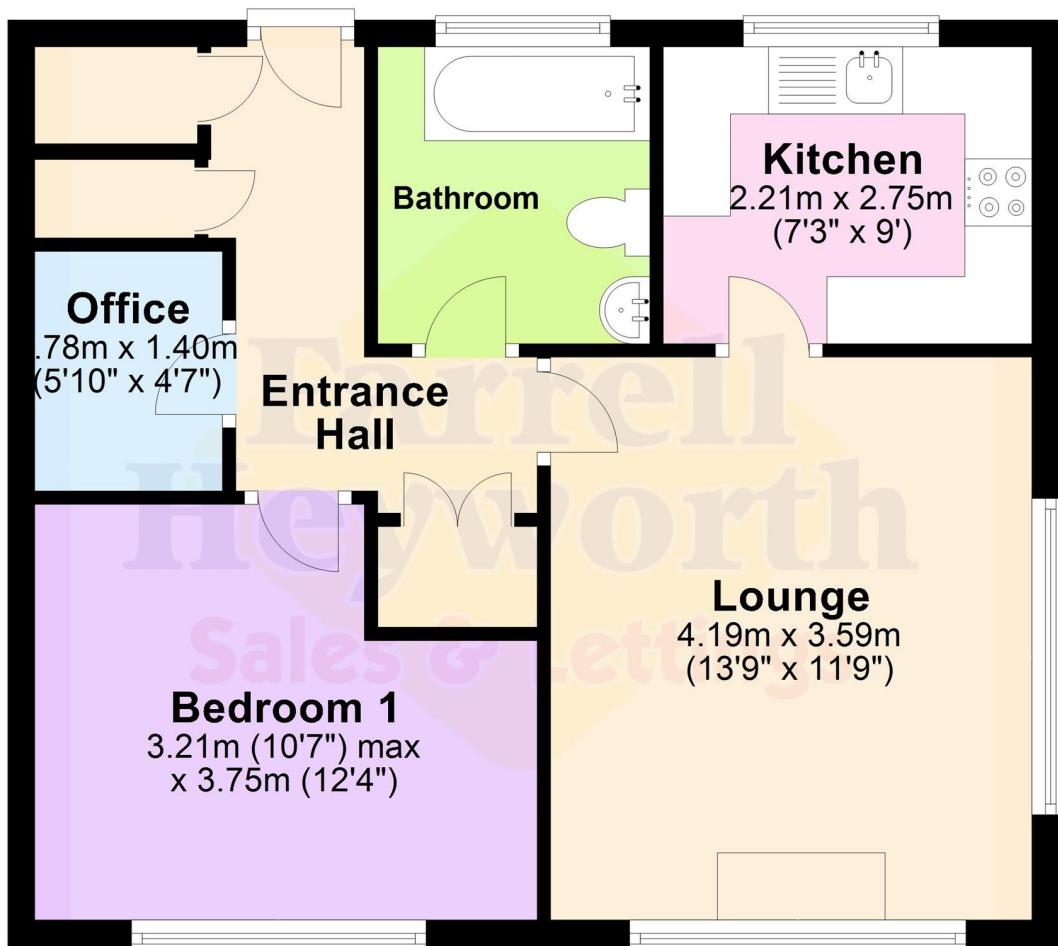


£55,000

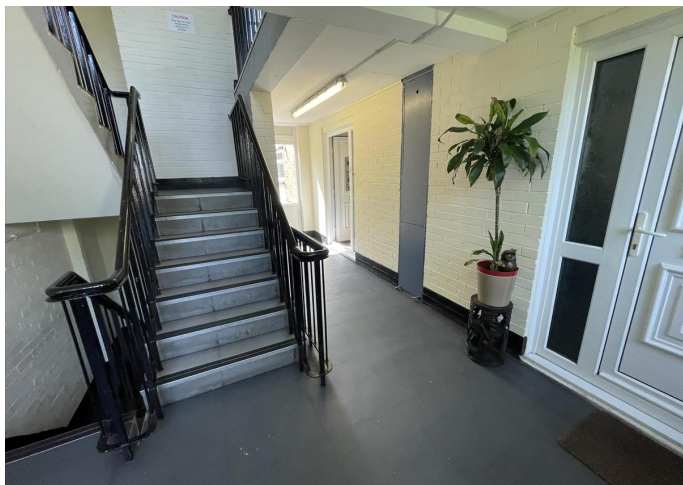
Winnipeg Place, Bispham,
Blackpool FY2



**Cleveleys
Landmark House
5a Cleveleys Avenue FY5 2UH**

Tel: 01253 858200

**Email: cleveleys@farrellheyworth.co.uk
<https://www.farrellheyworth.co.uk/cleveleys>**



- ****VIRTUAL VIEWING AVAILABLE. CLICK ON THE VIDEO TOUR ABOVE****
- **One Bed First Floor Flat, Good Central Location. NO CHAIN**
- **Lounge/Kitchen/Bedroom/Bathroom, Office, DG, GCH, Nice Aspect**
- **Close to Local Amenities, Schools & Transport Links, Parking**
- **Ideal FTB or Buy to Let, Value for Money**

Every care has been taken with the preparation of these Particulars but complete accuracy cannot be guaranteed. If there is any point, which is of particular importance to you, we will be pleased to check the information for you. These Particulars do not constitute a contract or part of a contract.

All measurements quoted are approximate and plans are for general guidance and are not to scale. The Fixtures, Fittings & Appliances have not been tested and therefore no guarantee can be given that they are in working order. Photographs are reproduced for general information and it cannot be inferred that any item shown is included in the sale.

Company Details - Farrell Heyworth Limited.

Registered Office: Second Floor Office Suite, The Pavillion, Church Street, Lancaster, LA1 1EX

Registered in England No. 3798432

Directors CP Heyworth FNAEA, JF Collins, JR Collins, SW Penny FRICS, JAG Shellcross MNAEA, JA French

EPC C

www.farrellheyworth.co.uk



This one bedroom first floor apartment is ideally placed in a good central location close to schools, transport and motorway links. The property is on the edge of a nice quiet estate.

The accommodation has intercom entry and comprises bright lounge, spacious bedroom, kitchen and bathroom plus an office/walk-in wardrobe.

The property benefits from gas central heating and double glazing.

Externally there is allocated parking.

Tenure: Leasehold
Leasehold information: Terms: TBC
Current Ground Rent:
Current Maintenance/Service Charges: TBC

Council Tax: Band A

“ What The Agent Says ”

The property does require a little tlc but would be ideal for a first time buyer or buy to let investor. The flat has been priced to sell and is being sold with no onward chain. Call Farrell Heyworth today as this won't be around for long.

